

HDD Sheriff: PCI Card Version Manual

Contents

Welcome - - - - -	1
Installing HDD Sheriff	
Versions and System Requirements - - - - -	2
Installing the PCI Card - - - - -	2
Installing HDD Sheriff Software - - - - -	2
Using HDD Sheriff	
HDD Sheriff Capabilities and Usage - - - - -	6
HDD Sheriff DOS Console Usage - - - - -	6
Using the HDD Sheriff Remote Management	
Installing Remote Management - - - - -	7
Using Remote Management - - - - -	7

Welcome:

Thank you for choosing The HDD Sheriff to protect your system. Please read the following set of instructions thoroughly before attempting to install HDD Sheriff. This will help to prevent problems with your installation and help you understand the potential benefits this product has to offer. For those of you who have had experience with HDD Sheriff in the past, we recommend you also read this document, as some items may have changed. Whenever adding or removing devices to a computer, it is important to remember to not only ensure the computer is powered off, but also that the system is unplugged from an electrical source. Many newer computers may still have live electrical circuits even when powered down. Unplugging the computer will lower the chance of damaging the device being added, the system, and reduce the possibility of electrocution. Please remember to register your product, as this is a requirement for receiving our technical support.

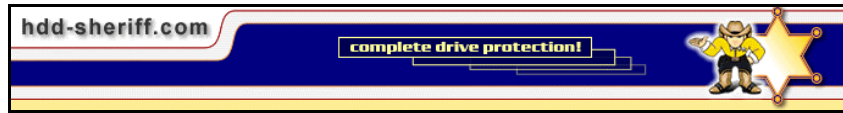
For a listing of features and functions, be sure to read the **Using HDD Sheriff** portion of this manual.

This device complies with part 15 of the FCC Rules. Operation is subject to two conditions:

- 1) This device may not cause harmful interference.
- 2) This device must accept interference, including interferences that may cause undesirable operation.

This device has been evaluated and found satisfactory with CE standards applied, EN55022: 1994/A1: 1995(Class B) & EN50082-1: 1997, and is also in conformity with the technical provisions of EMC directive 89/336/EEC.

Trademarks: Microsoft® and Windows® are trademarks of Microsoft Corporation. Designated trademarks are property of their respective owners. HDD Sheriff™ is a registered trademark.



Installing HDD Sheriff

Versions and System Requirements

HDD Sheriff requires that the computer be running Windows 95 / 98 / ME / NT / 2000 / XP, and be using TCP/IP network protocol for remote management. One PCI slot is needed to install the PCI card, and approximately 5% of a hard disk's must be free for HDD Sheriff to protect the drive. It is highly recommended that you defragment your hard drive using the included Windows defragmenter prior to installing HDD Sheriff.

Installing the PCI Card

Before installing HDD Sheriff, it is recommended that you back up all your data, in case of a bad installation or other problem.

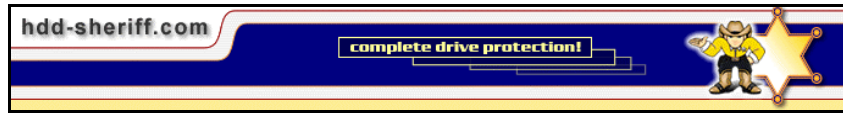
To install the HDD Sheriff PCI card, first download the PCI software for HDD Sheriff from www.hdd-sheriff.com. The software is needed to install both the PCI card and the HDD Sheriff program. If you have an installation disk, you may skip this step. You will also need administrator rights on your computer to install HDD Sheriff.

Next, turn off and unplug the computer you wish to install it into. Ensure that the computer is not hooked up to any electrical sources, as installing the PCI card while the computer is powered risks electrocution and damage to the computer and PCI card. Once the computer is powered down and unplugged, remove the side casing, and find an available PCI slot on the motherboard. Place the card in the slot and ensure that it is properly fitted. Put the case back onto the computer and replace all cords.

Start up the computer, and Windows should detect a "PCI Flash" device. If Windows does not automatically detect the card, you will need to install it manually through the Add/Remove Hardware program in the Control Panel. When Windows asks, choose to find the driver manually. If using Windows 95 / 98 / ME, the driver you need will be in the root folder of your installation disk, or the folder which you downloaded the software to. If you are using Windows NT / 2000 / XP, the driver you need will be in the root folder of the installation disk or download, under the folder WinNT. Once the driver is installed, restart your computer to finalize the installation.

Installing the HDD Sheriff Software

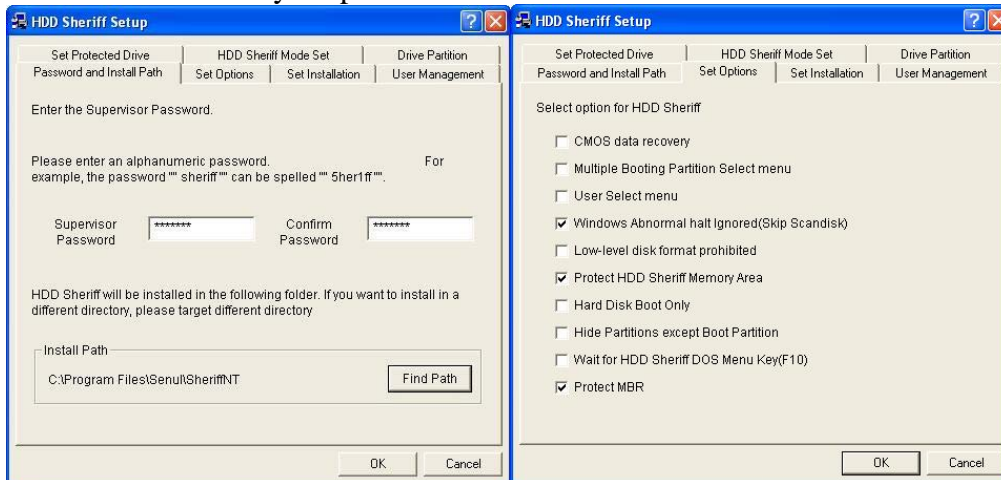
When you have logged back into Windows, run the Setup program in the root folder of the CD or download. This will begin the software installation.



The first thing you will want to do is set up the HDD Sheriff Options. Click Options on the menu that appears.



First, you may customize the install path and Supervisor password. The default password is “sheriff”, and you should change it to something more appropriate. Be sure to write down your password.



Click the Options tab to customize installation options. The options are listed as follows:

Option	Function
CMOS Data Recovery	Protects the BIOS memory from being altered. HDD Sheriff will automatically undo any changes made to the BIOS in Protection mode.
Multiple Booting Partition Select Menu	When the system boots up, HDD Sheriff will present a menu of bootable partitions, to allow the user to select which one he/she wants to boot from.
User Select Menu	HDD Sheriff will allow the user to select a user profile upon startup



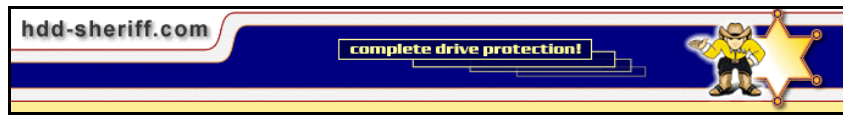
Windows Abnormal Halt Ignored	This option will force Windows to skip any attempts to scan the hard disk after shutting down improperly. Since the hard disk is restored at every restart, scanning for errors is unnecessary.
Low-Level Disk Format Prohibited	This option will disallow any attempts to do a low-level format on the hard disk.
Protect HDD Sheriff Memory Area	This option will give extra Protection to HDD Sheriff's memory area. It is sometimes needed on Windows NT and 2000.
Hard Disk Boot Only	This option will force the computer to boot from HDD0 upon startup, and bypass any attempts to boot from the floppy or CD-ROM drive.
Hide Partitions Except Boot Partition	This option will hide all partitions except the boot partition from the system.
Wait for HDD Sheriff Dos Menu Key	This option will force HDD Sheriff to wait a few seconds extra when displaying its loading screen. This allows the user more time to press F10 and enter the DOS menu
Protect MBR	This option will protect the Master Boot Record on the hard disk from change. Be warned that some programs (such as AutoCAD) use this area of the disk, and will not function properly with this option on.

You may also set some miscellaneous options under the Set Installation tab, such as booting into Supervisor mode upon restart, or making HDD Sheriff put a shortcut in the startup folder (causing it to start with Windows).

Due to some programs writing their licenses to the MBR (Master Boot Record), it may be necessary to change the program to accept and not overwrite these items in the MBR. Select the AutoCAD patch option if you have a program that writes its information in the MBR. AutoCAD® and 3DStudio® are examples of such programs.

Select the Change Virtual Drive option to change the Virtual drive to be placed on a non-protected drive. This is only required for Windows 95 / 98 / 98SE.

Under the User Management tab, you may create up to ten additional users, each with their own HDD Sheriff options. One user could have auto recovery selected, and have their hard drive recovered every time they start up, and another user could have manual recovery selected, so that they only recover when they feel it is necessary. The default user cannot be deleted, although the name can be changed. Note that when one user does a manual recovery, all users with manual recovery selected will have their data recovered. Also, the Supervisor can change any of the user profiles at any time.



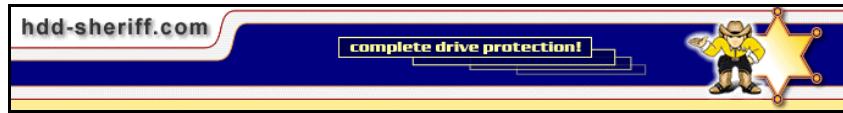
Under the Drive Partition tab, you can partition a drive, and rename or modify other partitions.

Under the HDD Sheriff Mode Set tab, you can select each user's recovery mode, either automatic or manual.

Lastly, the Set Protected Drive tab allows you to set which drives will be protected, and which users will be protected on what drives. You can also set how much space will be set aside for recovery data.

Once all options are set, press "Okay" to return to the main setup screen. Press install, and you will be prompted to accept a license agreement, which you must accept to continue. You will also be asked to type in your name, organization, and serial number. Afterwards, the installation will complete and you will need to restart your computer.



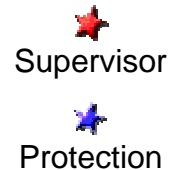


Using HDD Sheriff

HDD Sheriff Capabilities and Usage

HDD Sheriff is a very powerful data recovery tool. When installed, it can recover an entire hard drive instantly upon restarting the computer.

HDD Sheriff is primarily operated within Windows. An icon in the taskbar will appear to let you know whether HDD Sheriff is in Protection or Supervisor mode, and allow you to change the mode. You may also change shortcut keys and view your current mode. The icon in the taskbar will either be a blue star, indication you are in Protection mode, or a red star, indicating you are in Supervisor mode.



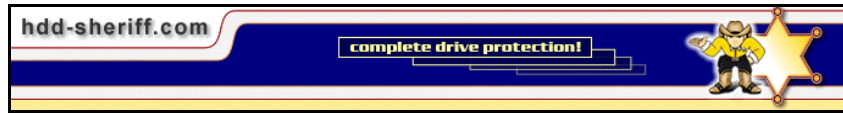
When In Protection mode, the hard drive will automatically be restored to the last Supervisor configuration every time the system restarts. All data that was changed / added / removed will be lost. This means the system is nearly impervious to viruses, spy ware, and other negative system changes, since they are all wiped out every time the system reboots. In Supervisor mode, all changes will be kept until Protection mode is turned back on.

If you did not select the “Automatically run HDD Sheriff at startup” option when installing, the icon will not appear. Remember that HDD Sheriff is always running when installed; the icon is merely an indication.

HDD Sheriff DOS Console Usage

The user of the computer is given the opportunity to load HDD Sheriff’s DOS console upon every system start up. Before Windows loads, the message “Loading HDD Sheriff...” will appear for three to five seconds, during which the user can press F10 to enter the DOS console.

This console allows the user to switch user profiles, or manage the HDD Sheriff software as a Supervisor. At the initial DOS console, the user can press F10 again and enter the Supervisor password to configure the HDD Sheriff software. All the options from the initial install can be set again in the Console. The Supervisor can also manage user accounts, set a new Supervisor password, copy a hard disk (only identical type hard disks), or uninstall HDD Sheriff.



Using the HDD Sheriff Remote Management

Installing Remote Management

Installing Remote Management is quite simple. Simply go to www.hdd-sheriff.com and download the Client Manager software. Extract the software that you require (either DHCP or regular) and install either the client or Supervisor package. You will need to supply your name, organization, and a serial number, which for now is CM10BSTT9490. The Supervisor package will allow you to manage other computers running the Client package. Once the software is installed, you may use it. The Supervisor package may be used immediately, while the Client package requires the computer to restart; it will run automatically every start up once it is installed.

Using Remote Management

The Remote Management software is very simple to use. The client package needs no user intervention; it will always run every time the system starts up. In the Supervisor package, you may set up a group of computers to manage.

Upon running the Supervisor package, you will need to type in the Supervisor password. From there, you will have a menu displayed on the screen. The buttons along the left allow you to perform various actions, the area in the middle contains your computer groups, and the area on the right shows individual computers. The first thing you will want to do is add a group. Press the “Add New Group” button on the left and name it as you wish. You should then add computers to the group, either through the “Add Computer” button or the “Add Computer using IP Address” button. Once computers are added, you can remotely manage them with various actions. Many of the actions have the option of either forcing the action, or asking permission. Forcing the action will cause it to happen without the user’s permission, whereas asking for permission will ask the user before completing the action.



Add/Remove Buttons

Add Computer

Add Computer using IP

Add New Group

Refresh Computer
Status

Switch HDD Sheriff
Mode

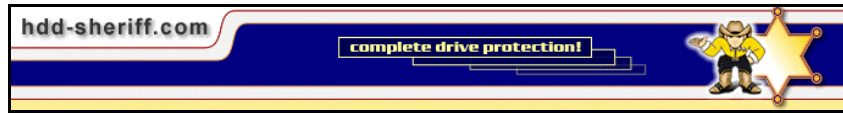
Manage Computer
Power

Freeze Screen

Release Screen

Save Settings

Exit



<u>Action</u>	<u>Result</u>
Sheriff Mode Change	With this option, you can change the mode that HDD Sheriff is currently running on the remote computer.
Power Management	With this option, you can force a computer to shut down, restart, or turn on. Turning on a computer remotely requires that LAN wakeup be enabled in the system BIOS.
Freeze Screen	This action will freeze the screen of the computer, either simply freezing it still or displaying the HDD Sheriff logo across the whole screen. The computer will not accept user input while frozen.
Release Screen	This option will release the users screen from being frozen.